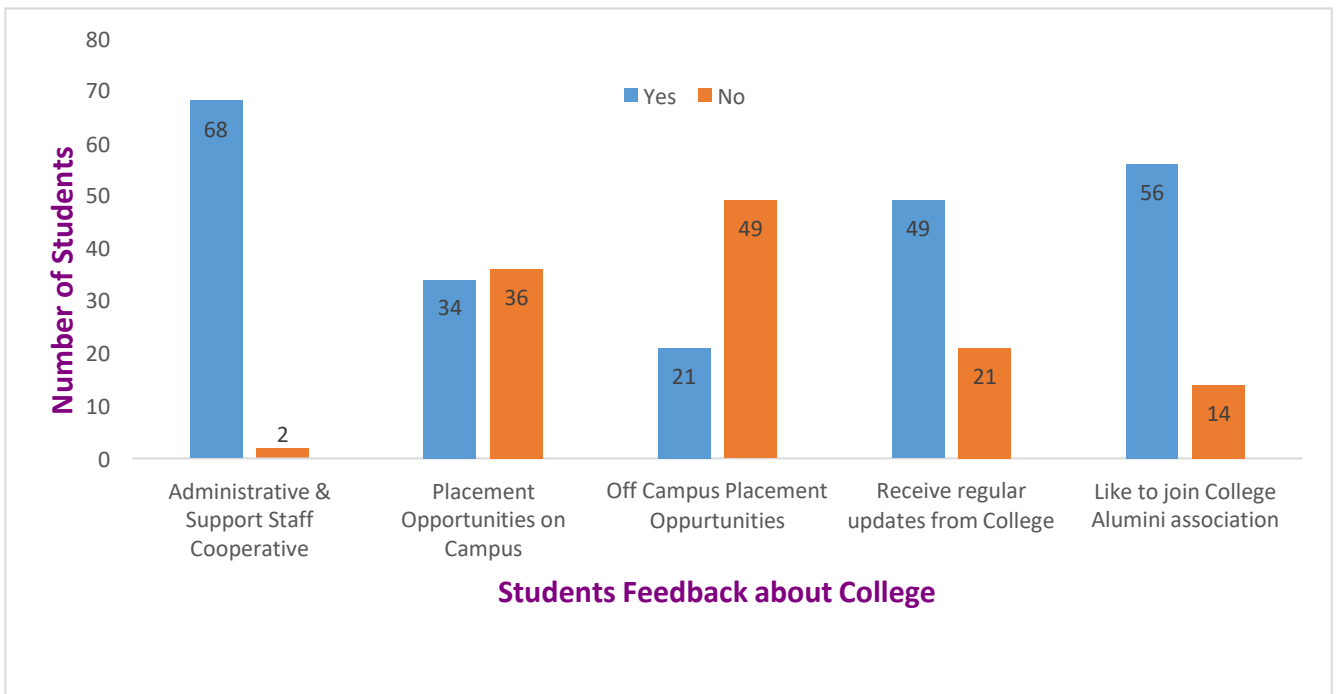
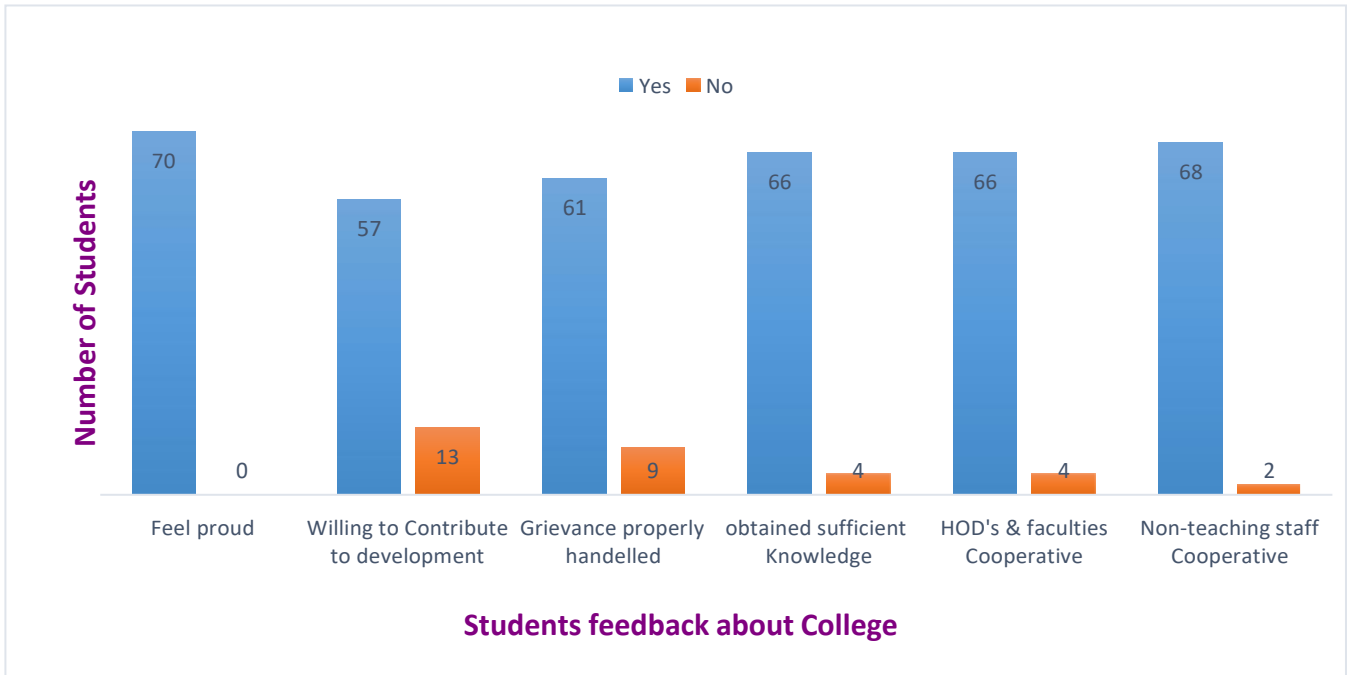
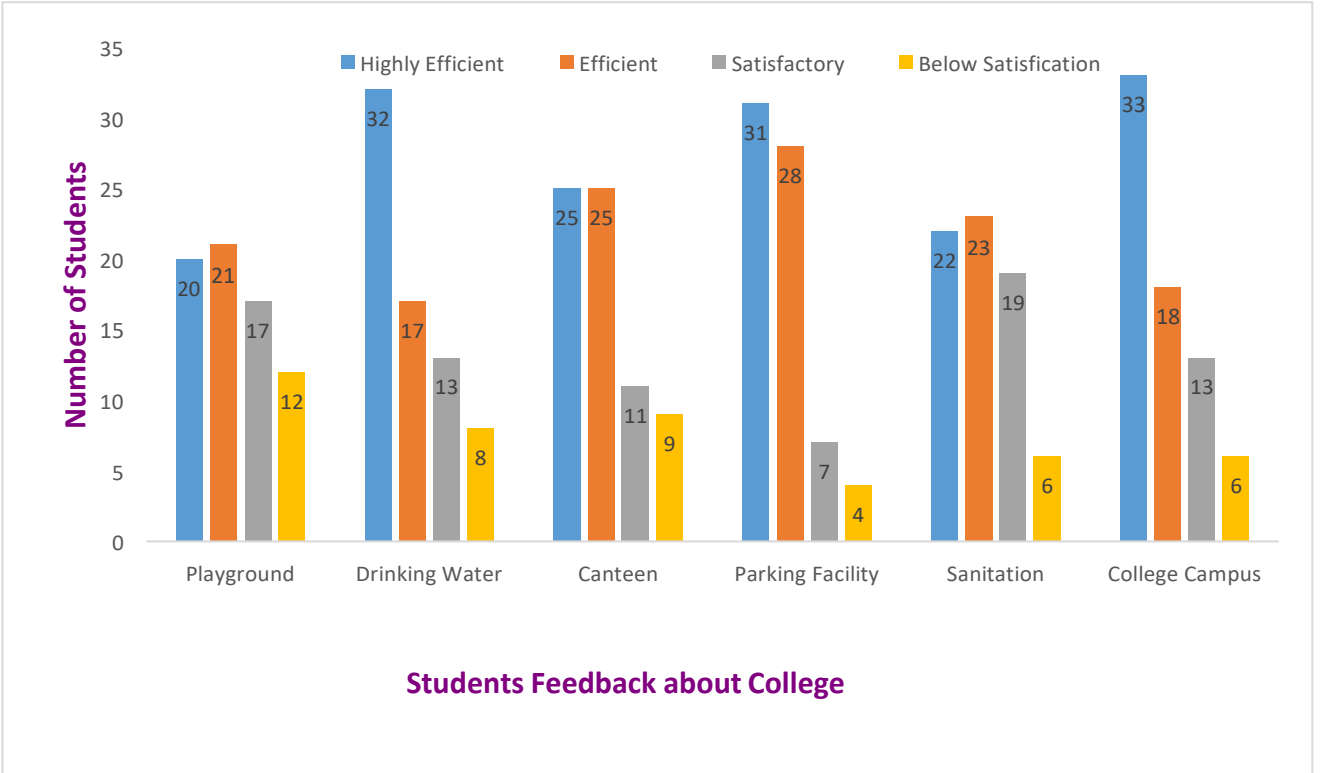
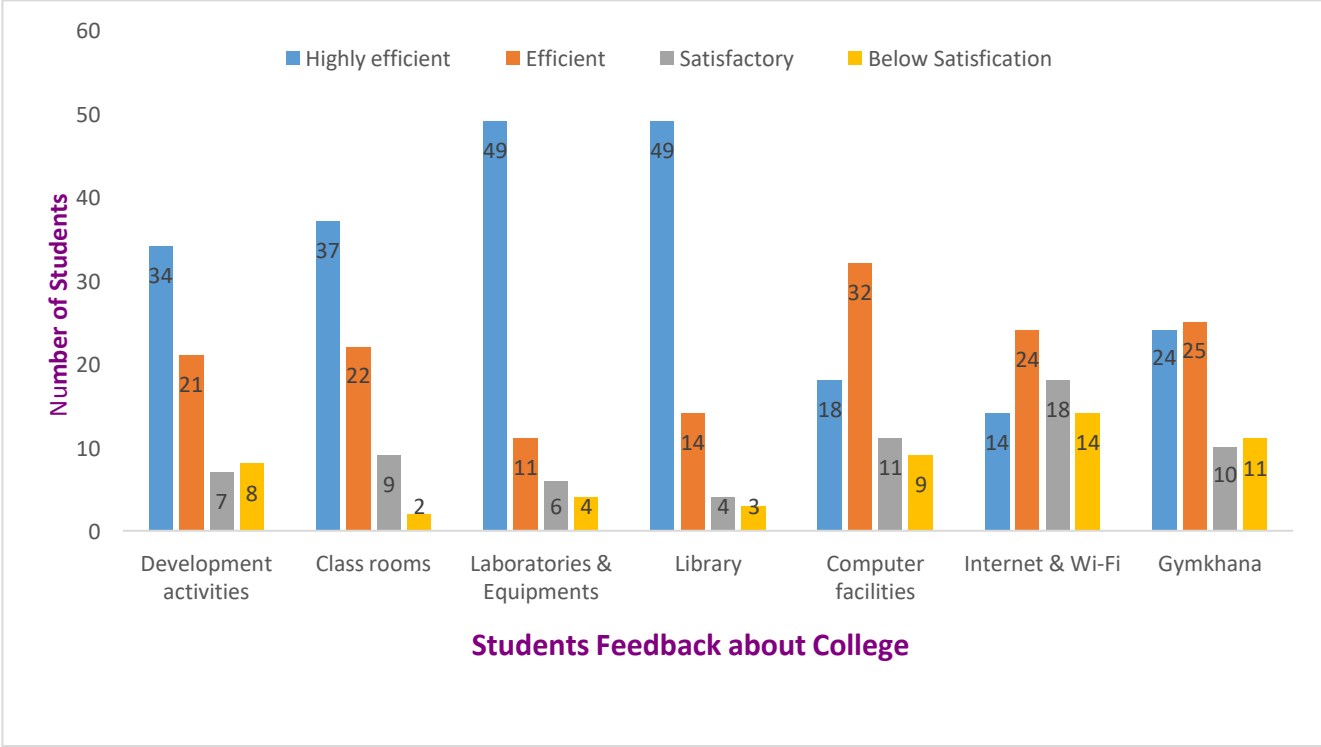


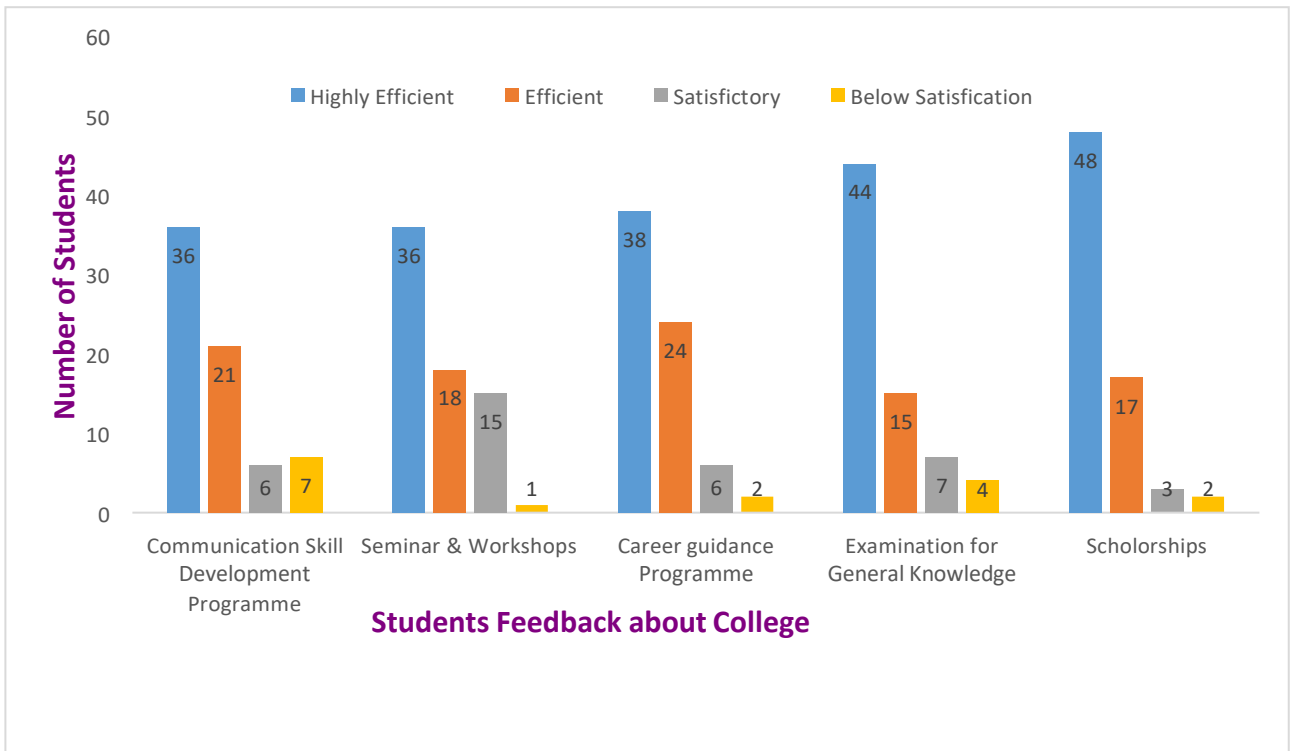
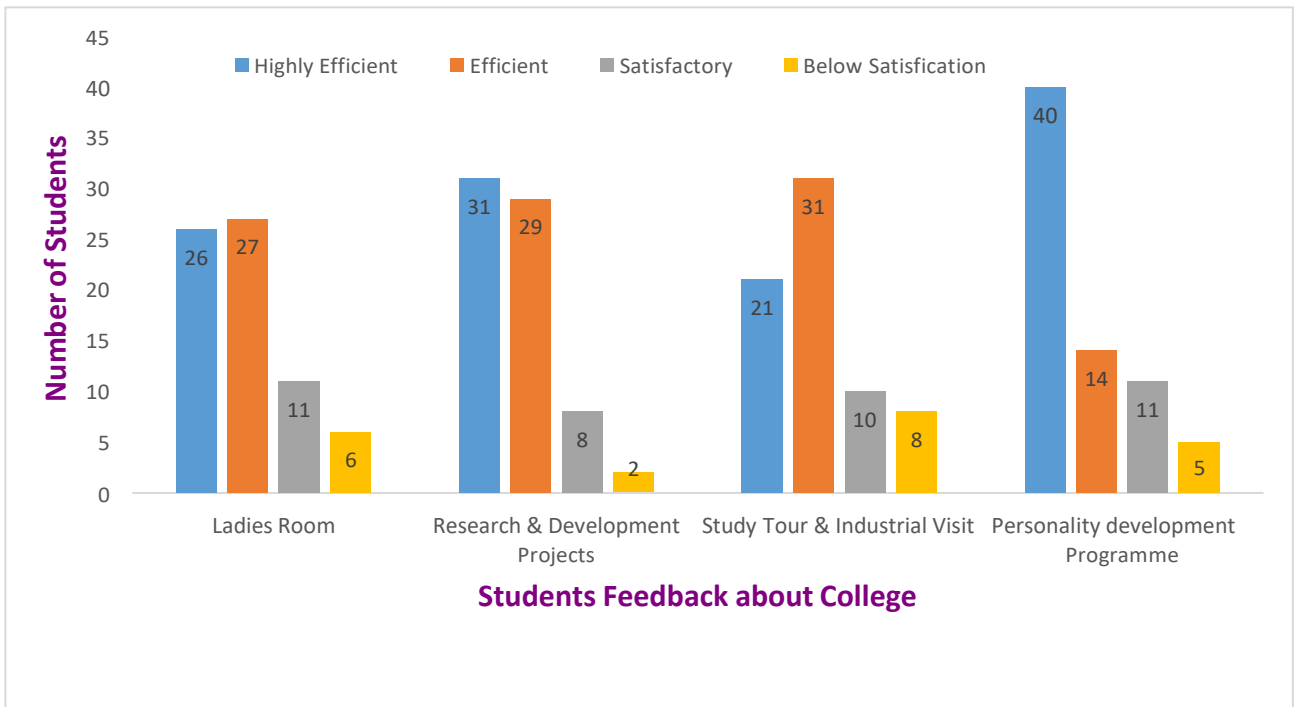
An Analysis of Feedback (2017-18)

1) Students Feedback Response Analysis about College facilities.

Total number of responses: 70

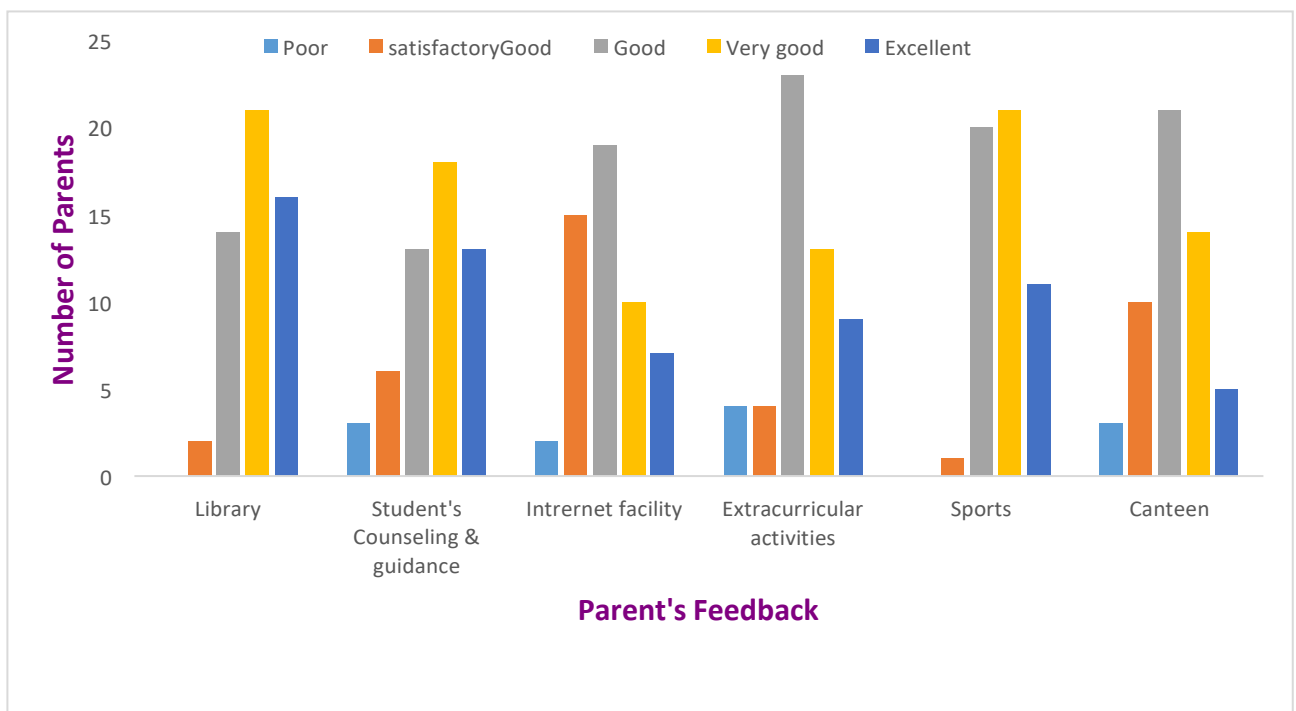
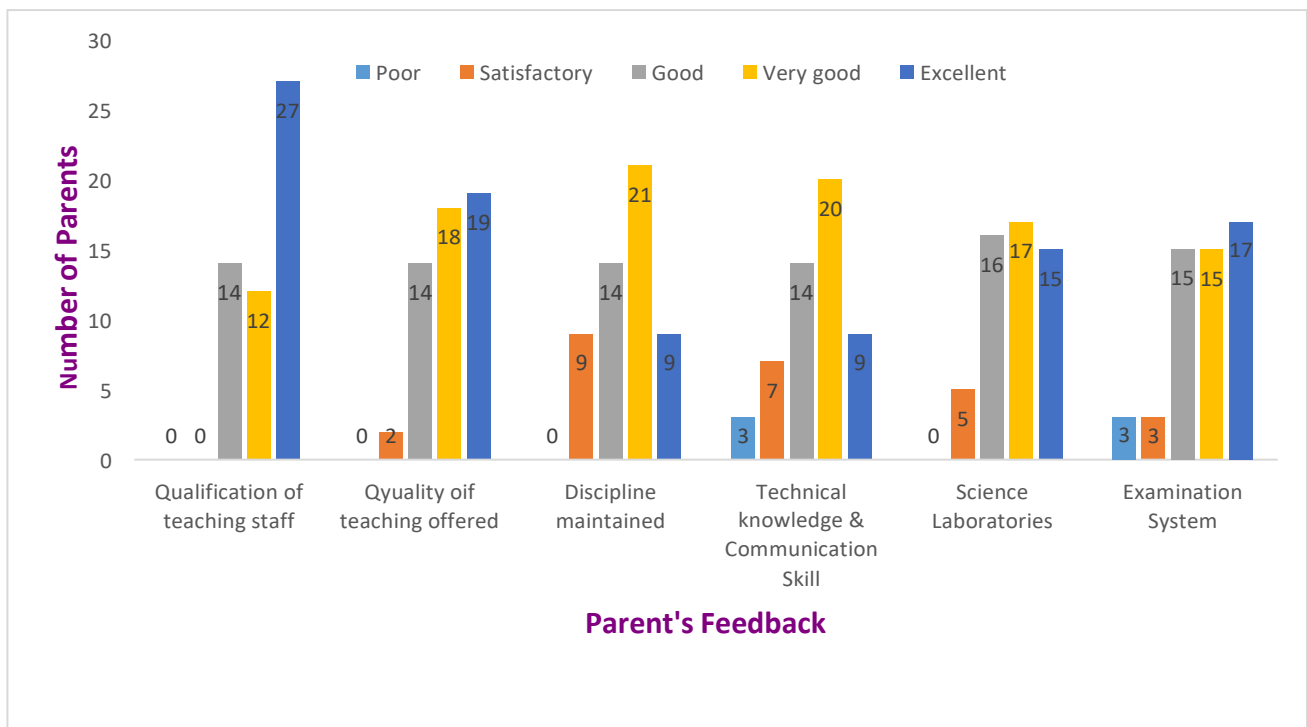


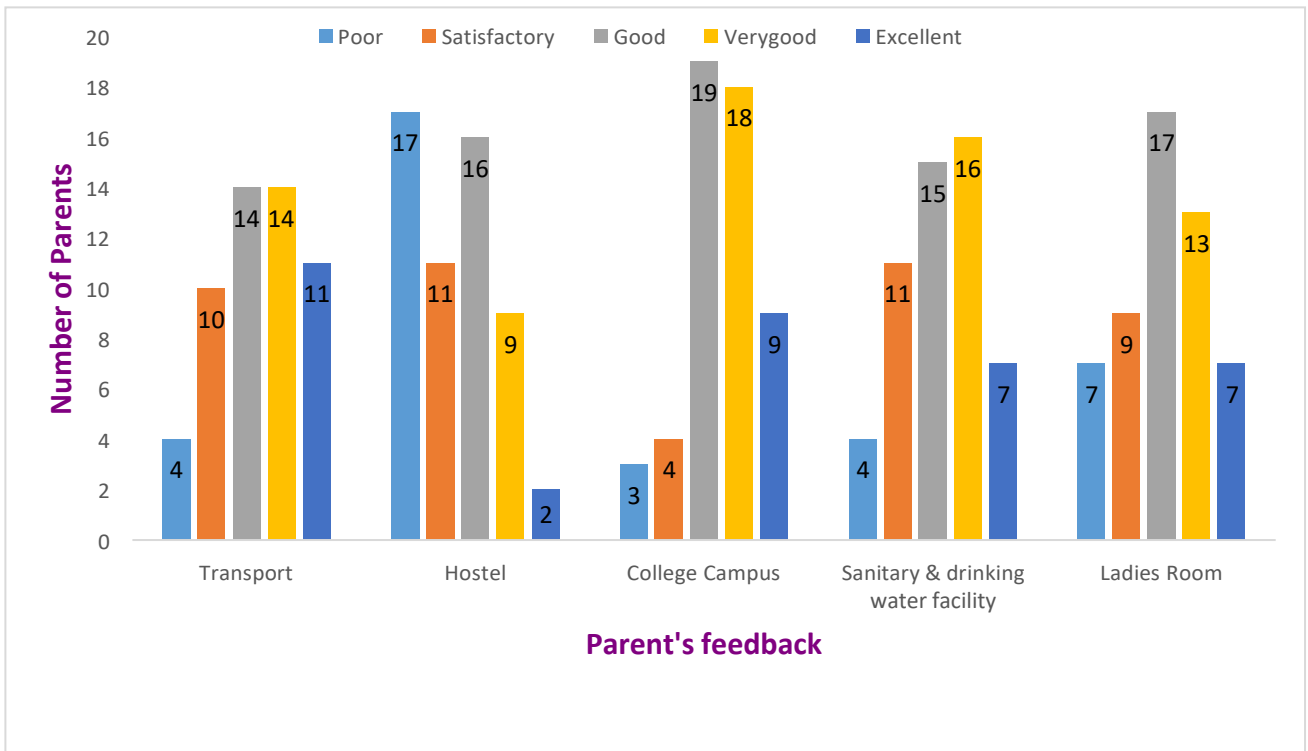




2. Parents Feedback Response Analysis about College facilities.

Total number of responses : 27





Alwale
 Co-ordinator
 IQAC
 S.E. Society's Art's &
 Science College, Bhalod



Alwale
 PRINCIPAL
 S E Society's
 Arts & Science College
 Bhalod Dist Jaigaon



Secondary Education Society's

Arts and Science College, Bhalod

NAAC Re-Accredited B Grade

Student Feedback About College for the year 2018-2019

No of Respondant : 25

Q.1 : The office and Laboratory Staff in the College is Cooperative

- (13) Strongly agree
- (11) Agree
- (1) Not sure
- (0) Disagree
- (0) Strongly Disagree

Q.2 : The Campus is clean and eco-friendly

- (10) Strongly agree
- (12) Agree
- (2) Not sure
- (1) Disagree
- (0) Strongly Disagree

Q.3 : Laboratory equipment's are in working condition

- (9) Strongly agree
- (15) Agree
- (1) Not sure
- (0) Disagree
- (0) Strongly Disagree

Q.4 : The prescribed books and reference material available in the Library.

- (13) Strongly agree
- (9) Agree
- (3) Not sure
- (0) Disagree
- (0) Strongly Disagree

Q.5 : Toilet/ Washrooms are clean and properly maintained.

- (4) Strongly agree
- (16) Agree
- (2) Not sure
- (0) Disagree
- (3) Strongly Disagree

Q.6 : Our grievances redressed/ problems are solved well in time

- (8) Strongly agree
- (15) Agree
- (2) Not sure
- (0) Disagree
- (0) Strongly Disagree

Q.7 : Internet facility is provided in Library and Laboratory

- (8) Strongly agree
- (11) Agree
- (3) Not sure
- (3) Disagree
- (0) Strongly Disagree

Date :

Place :



11/10/22, 10:50 AM



Admission Application SES's Arts and Science College, Bhalod



Signature of the Criteria Head :

Signature of the IQAC Head

Signature of the Principal

Printed By : sysadmin2

Printed On : 10-11-2022 10:49:31

Principal
Arts & Sci College
Bhalod Tal Yawal

Co-ordinator
IQAC
S.E. Society's Art's &
Science College, Bhalod





Secondary Education Society's

Arts and Science College, Bhalod

NAAC Re-Accredited B Grade

Student Feedback About Curriculum for the year 2018-2019

No of Respondant : 15

Q.1 : Curriculum content is interesting

- (11) Strongly agree
- (11) Agree
- (0) Not sure
- (3) Disagree
- (0) Strongly Disagree

Q.2 : Curriculum is applicable in your daily life.

- (8) Strongly agree
- (14) Agree
- (1) Not sure
- (2) Disagree
- (0) Strongly Disagree

Q.3 : Curriculum is helping in developing your personality.

- (10) Strongly agree
- (12) Agree
- (0) Not sure
- (3) Disagree
- (0) Strongly Disagree

Q.4 : How much of the syllabus was covered in the class?

- (13) 85 to 100%
- (9) 70 to 84%
- (3) 2 - 55 to 69%
- (0) 30 to 54%
- (0) Below 30%

Q.5 : How well did the teachers prepare for the classes?

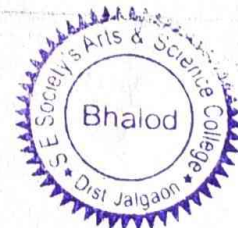
- (13) Thoroughly
- (10) Satisfactorily
- (2) Poorly
- (0) Indifferently
- (0) Won't teach at all

Q.6 : How well were the teachers able to communicate?

- (13) Always effective
- (10) Sometimes effective
- (1) Just satisfactorily
- (1) Generally ineffective
- (0) Very poor communication

Q.7 : The teacher's approach to teaching can best be described as

- (10) Excellent
- (13) Very good
- (2) Good
- (0) Fair
- (0) Poor



No of Respondant : 1

Q.16 : Any another Suggestion.

- (0)
- (0)
- (0)
- (0)
- (0)

Date :

Place :

Signature of the Criteria Head :

Signature of the IQAC Head

Signature of the Principal

Printed By : sysadmin2

Printed On : 10-11-2022 10:51:26

Principal
Arts & Sci. College
Bhalod Tal. Yawal

Co-ordinator
IQAC
S.E. Society's Art's &
Science College, Bhalod





Secondary Education Society's
Arts and Science College, Bhalod
 NAAC Re-Accredited B Grade
Alumani Feedback for the year 2019-2020

No of Respondant : 12

Q.1 : Do You feel proud to be associated with SES Arts & science College, Bhalod as a Alumni?

- (0)
- (0)
- (0)
- (11) Yes
- (1) No

Q.2 : Are you willing to contribute to the development of the college?

- (0)
- (0)
- (0)
- (11) Yes
- (1) No

Q.3 : Were / Are your grievances properly handled at the college? as a Student?

- (0)
- (0)
- (0)
- (12) Yes
- (0) No

Q.4 : Were / Are your grievances properly handled at the college? as a alumni

- (0)
- (0)
- (0)
- (12) Yes
- (0) No

Q.5 : How do you rate development activities organized by the college for your overall development?

- (0)
- (7) A) Highly Efficient
- (4) B) Efficient
- (1) C) Satisfactory
- (0) D) Below Satisfaction

Q.6 : Rate Classroom facility provided by college.

- (0)
- (6) A) Highly Efficient
- (5) B) Efficient
- (1) C) Satisfactory
- (0) D) Below Satisfaction

Q.7 : Rate Laboratories & Equipments facility provided by college.

- (0)
- (7) A) Highly Efficient
- (4) B) Efficient
- (1) C) Satisfactory
- (0) D) Below Satisfaction



No of Respondant : 12**Q.8 : Rate Library facility provided by college.**

- (0)
- (8) A) Highly Efficient
- (3) B) Efficient
- (1) C) Satisfactory
- (0) D) Below Satisfaction

Q.9 : Rate Computer facility provided by college.

- (0)
- (8) A) Highly Efficient
- (3) B) Efficient
- (0) C) Satisfactory
- (1) D) Below Satisfaction

Q.10 : Rate Gymkhana facility provided by college.

- (0)
- (8) A) Highly Efficient
- (3) B) Efficient
- (1) C) Satisfactory
- (0) D) Below Satisfaction

Q.11 : Rate Playground facility provided by college.

- (0)
- (7) A) Highly Efficient
- (4) B) Efficient
- (1) C) Satisfactory
- (0) D) Below Satisfaction

Q.12 : Rate Drinking water facility provided by college.

- (0)
- (5) A) Highly Efficient
- (6) B) Efficient
- (1) C) Satisfactory
- (0) D) Below Satisfaction

Q.13 : Rate Parking acility provided by college.

- (0)
- (7) A) Highly Efficient
- (4) B) Efficient
- (0) C) Satisfactory
- (1) D) Below Satisfaction

Q.14 : Rate Sanitation acility provided by college.

- (0)
- (6) A) Highly Efficient
- (5) B) Efficient
- (1) C) Satisfactory
- (0) D) Below Satisfaction

Q.15 : Rate College Campus facility provided by college.

- (0)
- (0) A) Highly Efficient
- (0) B) Efficient
- (0) C) Satisfactory
- (0) D) Below Satisfaction



No of Respondant : 12

Q.16 : Rate Research & Development of Project facility provided by college.

- (0)
- (0) A) Highly Efficient
- (0) B) Efficient
- (0) C) Satisfactory
- (0) D) Below Satisfaction

| | | | |
|------------------------|---|--|---|
| Date : | | | |
| Place : | | | |
| |  |  |  |
| | Signature of the Criteria Head : | Signature of the IQAC Head | Signature of the Principal |
| Printed By : sysadmin2 | |  |  |





Secondary Education Society's

Arts and Science College, Bhalod

NAAC Re-Accredited B Grade

Student Feedback About Curriculam for the year 2019-2020

No of Respondant : 64

Q.1 : Curriculum content is interesting

- (25) Strongly agree
- (31) Agree
- (5) Not sure
- (3) Disagree
- (0) Strongly Disagree

Q.2 : Curriculum is applicable in your daily life.

- (25) Strongly agree
- (29) Agree
- (6) Not sure
- (3) Disagree
- (1) Strongly Disagree

Q.3 : Curriculum is helping in developing your personality.

- (28) Strongly agree
- (31) Agree
- (3) Not sure
- (2) Disagree
- (0) Strongly Disagree

Q.4 : How much of the syllabus was covered in the class?

- (31) 85 to 100%
- (28) 70 to 84%
- (3) 2 – 55 to 69%
- (1) 30 to 54%
- (1) Below 30%

Q.5 : How well did the teachers prepare for the classes?

- (29) Thoroughly
- (27) Satisfactorily
- (7) Poorly
- (0) Indifferently
- (1) Won't teach at all

Q.6 : How well were the teachers able to communicate?

- (35) Always effective
- (19) Sometimes effective
- (5) Just satisfactorily
- (3) Generally ineffective
- (2) Very poor communication

Q.7 : The teacher's approach to teaching can best be described as

- (28) Excellent
- (25) Very good
- (10) Good
- (1) Fair
- (0) Poor



No of Respondant : 64

Q.8 : What percentage of teachers use ICT tools such as LCD projector, Multimedia, etc. while teaching.

- (28) Above 90%
- (25) 70 – 89%
- (9) 50 – 69%
- (1) 30 – 49%
- (1) Below 29%

Q.9 : Teachers encourage you to participate in extracurricular activities.

- (27) Strongly agree
- (29) Agree
- (7) Neutral
- (1) Disagree
- (0) Strongly disagree

Q.10 : Fairness of the internal evaluation process by the teachers.

- (34) Always fair
- (25) Usually fair
- (5) Sometimes unfair
- (0) Usually unfair
- (0) Unfair

Q.11 : Was your performance in assignments discussed with you?

- (32) Every time
- (23) Usually
- (6) Occasionally/Sometimes
- (2) Rarely
- (1) Never

Q.12 : Efforts are made by the institute/ teachers to inculcate soft skills, life skills and Employability skills to make you ready for the world of work.

- (30) To a great extent
- (28) Moderate
- (4) somewhat
- (2) Very little
- (0) Not at all

Q.13 : The institution provides multiple opportunities to learn and grow.

- (25) Strongly agree
- (32) Agree
- (6) Neutral
- (1) Disagree
- (0) Strongly disagree

Q.14 : The institution makes effort to engage students in the monitoring, review and continuous quality improvement of the teaching learning process.

- (30) Strongly agree
- (26) Agree
- (7) Neutral
- (1) Disagree
- (0) Strongly disagree

Q.15 : The overall quality of teaching-learning process in your institute is very good.

- (32) Strongly agree
- (25) Agree
- (6) Neutral
- (0) Disagree
- (1) Strongly disagree



No of Respondant : 64

Q.16 : Any another Suggestion.

- (0)
- (0)
- (0)
- (0)
- (0)

Date :

Place :

Signature of the Criteria Head :

Signature of the IQAC Head

Signature of the Principal

Printed By : sysadmin2

Printed On : 10-11-2022

Coordinator
IQAC
S.E. Society's Art's &
Science College, Bhalod

Principal
Arts & Sci. College
Bhalod Tal. Yawal





Secondary Education Society's

Arts and Science College, Bhalod

NAAC Re-Accredited B Grade

Student Feedback About College for the year 2019-2020

No of Respondant : 64

Q.1 : The office and Laboratory Staff in the College is Cooperative

- (33) Strongly agree
- (29) Agree
- (2) Not sure
- (0) Disagree
- (0) Strongly Disagree

Q.2 : The Campus is clean and eco-friendly

- (27) Strongly agree
- (23) Agree
- (5) Not sure
- (7) Disagree
- (2) Strongly Disagree

Q.3 : Laboratory equipment's are in working condition

- (24) Strongly agree
- (31) Agree
- (6) Not sure
- (2) Disagree
- (1) Strongly Disagree

Q.4 : The prescribed books and reference material available in the Library.

- (30) Strongly agree
- (29) Agree
- (3) Not sure
- (2) Disagree
- (0) Strongly Disagree

Q.5 : Toilet/ Washrooms are clean and properly maintained.

- (21) Strongly agree
- (20) Agree
- (7) Not sure
- (10) Disagree
- (6) Strongly Disagree

Q.6 : Our grievances redressed/ problems are solved well in time

- (30) Strongly agree
- (24) Agree
- (5) Not sure
- (4) Disagree
- (1) Strongly Disagree

Q.7 : Internet facility is provided in Library and Laboratory

- (25) Strongly agree
- (27) Agree
- (6) Not sure
- (2) Disagree
- (4) Strongly Disagree

Date :

Place :



11/10/22, 10:56 AM

Admission Application SES's Arts and Science College, Bhalod

Signature of the Criteria Head :

Signature of the IQAC Head

Signature of the Principal

Printed By : sysadmin2

Printed On : 10/11/2022 10:56 AM

IP Address :

Co-ordinator
 IQAC
 S.E. Society's Art's &
 Science College, Bhalod

Principal
 Arts & Sci College
 Bhalod Tal Yawal





Secondary Education Society's

Arts and Science College, Bhalod

NAAC Re-Accredited B Grade

Alumani Feedback for the year 2020-2021

No of Respondant : 16

Q.1 : Do You feel proud to be associated with SES Arts & science College, Bhalod as a Alumni?

- (0)
 (0)
 (0)
 (16) Yes
 (0) No

Q.2 : Are you willing to contribute to the development of the college?

- (0)
 (0)
 (0)
 (15) Yes
 (1) No

Q.3 : Were / Are your grievances properly handled at the college? as a Student?

- (0)
 (0)
 (0)
 (16) Yes
 (0) No

Q.4 : Were / Are your grievances properly handled at the college? as a alumni

- (0)
 (0)
 (0)
 (16) Yes
 (0) No

Q.5 : How do you rate development activities organized by the college for your overall development?

- (0)
 (7) A) Highly Efficient
 (8) B) Efficient
 (1) C) Satisfactory
 (0) D) Below Satisfaction

Q.6 : Rate Classroom facility provided by college.

- (0)
 (7) A) Highly Efficient
 (7) B) Efficient
 (2) C) Satisfactory
 (0) D) Below Satisfaction

Q.7 : Rate Laboratories & Equipments facility provided by college.

- (0)
 (9) A) Highly Efficient
 (4) B) Efficient
 (3) C) Satisfactory
 (0) D) Below Satisfaction



No of Respondant : 16**Q.8 : Rate Library facility provided by college.**

- (0)
(8) A) Highly Efficient
(4) B) Efficient
(4) C) Satisfactory
(0) D) Below Satisfaction

Q.9 : Rate Computer facility provided by college.

- (0)
(7) A) Highly Efficient
(4) B) Efficient
(5) C) Satisfactory
(0) D) Below Satisfaction

Q.10 : Rate Gymkhana facility provided by college.

- (0)
(5) A) Highly Efficient
(7) B) Efficient
(4) C) Satisfactory
(0) D) Below Satisfaction

Q.11 : Rate Playground facility provided by college.

- (0)
(8) A) Highly Efficient
(5) B) Efficient
(3) C) Satisfactory
(0) D) Below Satisfaction

Q.12 : Rate Drinking water facility provided by college.

- (0)
(8) A) Highly Efficient
(1) B) Efficient
(6) C) Satisfactory
(1) D) Below Satisfaction

Q.13 : Rate Parking acility provided by college.

- (0)
(6) A) Highly Efficient
(5) B) Efficient
(5) C) Satisfactory
(0) D) Below Satisfaction

Q.14 : Rate Sanitation acility provided by college.

- (0)
(8) A) Highly Efficient
(3) B) Efficient
(5) C) Satisfactory
(0) D) Below Satisfaction

Q.15 : Rate College Campus facility provided by college.

- (0)
(0) A) Highly Efficient
(0) B) Efficient
(0) C) Satisfactory
(0) D) Below Satisfaction



No of Respondant : 16

Q.16 : Rate Research & Development of Project facility provided by college.

- (0)
- (0) A) Highly Efficient
- (0) B) Efficient
- (0) C) Satisfactory
- (0) D) Below Satisfaction

| | | | |
|---------|---|--|---|
| Date : |  |  |  |
| Place : | Signature of the Criteria Head : | Signature of the IQAC Head | Signature of the Principal |

Printed By : sysadmin2

Printed On : 10-11-2022 11:28:01
Co-ordinator
IQAC
S.E. Society's Art's &
Science College, Bhalod

Acting Principal
S.E.Society's
Art's & Science College
Bhalod.Dist.Jalgaon





Secondary Education Society's

Arts and Science College, Bhalod

NAAC Re-Accredited B Grade

Student Feedback About College for the year 2020-2021

No of Respondant : 37

Q.1 : The office and Laboratory Staff in the College is Cooperative

- (20) Strongly agree
- (17) Agree
- (0) Not sure
- (0) Disagree
- (0) Strongly Disagree

Q.2 : The Campus is clean and eco-friendly

- (7) Strongly agree
- (30) Agree
- (0) Not sure
- (0) Disagree
- (0) Strongly Disagree

Q.3 : Laboratory equipment's are in working condition

- (15) Strongly agree
- (21) Agree
- (0) Not sure
- (0) Disagree
- (1) Strongly Disagree

Q.4 : The prescribed books and reference material available in the Library.

- (17) Strongly agree
- (20) Agree
- (0) Not sure
- (0) Disagree
- (0) Strongly Disagree

Q.5 : Toilet/ Washrooms are clean and properly maintained.

- (10) Strongly agree
- (19) Agree
- (8) Not sure
- (0) Disagree
- (0) Strongly Disagree

Q.6 : Our grievances redressed/ problems are solved well in time

- (5) Strongly agree
- (27) Agree
- (5) Not sure
- (0) Disagree
- (0) Strongly Disagree

Q.7 : Internet facility is provided in Library and Laboratory

- (11) Strongly agree
- (15) Agree
- (7) Not sure
- (4) Disagree
- (0) Strongly Disagree

Date :

Place :



11/10/22, 11:26 AM

Admission Application SES's Arts and Science College, Bhalod

Signature of the Criteria Head :

Signature of the IQAC Head

Signature of the Principal

Printed By : sysadmin2

Printed On : 10-11-2022, 11:25:43

Co-ordinator
IQAC
S.E. Society's Art's &
Science College, Bhalod

Acting Principal
S.E. Society's
Art's & Science College
Bhalod, Dist. Jalgaon
IP Address :





Secondary Education Society's

Arts and Science College, Bhalod

NAAC Re-Accredited B Grade

Student Feedback About Curriculum for the year 2020-2021

No of Respondant : 37

Q.1 : Curriculum content is interesting

- (6) Strongly agree
- (30) Agree
- (1) Not sure
- (0) Disagree
- (0) Strongly Disagree

Q.2 : Curriculum is applicable in your daily life.

- (10) Strongly agree
- (22) Agree
- (5) Not sure
- (0) Disagree
- (0) Strongly Disagree

Q.3 : Curriculum is helping in developing your personality.

- (10) Strongly agree
- (25) Agree
- (2) Not sure
- (0) Disagree
- (0) Strongly Disagree

Q.4 : How much of the syllabus was covered in the class?

- (17) 85 to 100%
- (20) 70 to 84%
- (0) 2 - 55 to 69%
- (0) 30 to 54%
- (0) Below 30%

Q.5 : How well did the teachers prepare for the classes?

- (12) Thoroughly
- (20) Satisfactorily
- (2) Poorly
- (1) Indifferently
- (2) Won't teach at all

Q.6 : How well were the teachers able to communicate?

- (19) Always effective
- (13) Sometimes effective
- (1) Just satisfactorily
- (3) Generally ineffective
- (1) Very poor communication

Q.7 : The teacher's approach to teaching can best be described as

- (12) Excellent
- (18) Very good
- (5) Good
- (2) Fair
- (0) Poor



No of Respondant : 37

Q.8 : What percentage of teachers use ICT tools such as LCD projector, Multimedia, etc. while teaching.

- (13) Above 90%
- (11) 70 – 89%
- (10) 50 – 69%
- (2) 30 – 49%
- (1) Below 29%

Q.9 : Teachers encourage you to participate in extracurricular activities.

- (13) Strongly agree
- (20) Agree
- (3) Neutral
- (1) Disagree
- (0) Strongly disagree

Q.10 : Fairness of the internal evaluation process by the teachers.

- (13) Always fair
- (23) Usually fair
- (0) Sometimes unfair
- (0) Usually unfair
- (1) Unfair

Q.11 : Was your performance in assignments discussed with you?

- (18) Every time
- (14) Usually
- (2) Occasionally/Sometimes
- (0) Rarely
- (3) Never

Q.12 : Efforts are made by the institute/ teachers to inculcate soft skills, life skills and Employability skills to make you ready for the world of work.

- (10) To a great extent
- (22) Moderate
- (2) somewhat
- (2) Very little
- (1) Not at all

Q.13 : The institution provides multiple opportunities to learn and grow.

- (11) Strongly agree
- (21) Agree
- (4) Neutral
- (1) Disagree
- (0) Strongly disagree

Q.14 : The institution makes effort to engage students in the monitoring, review and continuous quality improvement of the teaching learning process.

- (12) Strongly agree
- (20) Agree
- (4) Neutral
- (0) Disagree
- (1) Strongly disagree

Q.15 : The overall quality of teaching-learning process in your institute is very good.

- (13) Strongly agree
- (21) Agree
- (2) Neutral
- (0) Disagree
- (1) Strongly disagree



No of Respondant : 37

Q.16 : Any another Suggestion.

- (0)
- (0)
- (0)
- (0)
- (0)

Date :

Place :

Signature of the Criteria Head :

Signature of the IQAC Head

Signature of the Principal

Printed By : sysadmin2

Printed On : 11-10-2022
Co-ordinator
IQAC
S.E. Society's Art's &
Science College, Bhalod

Acting Principal
S.E. Society's Address :
Art's & Science College
Bhalod, Dist. Jalore

